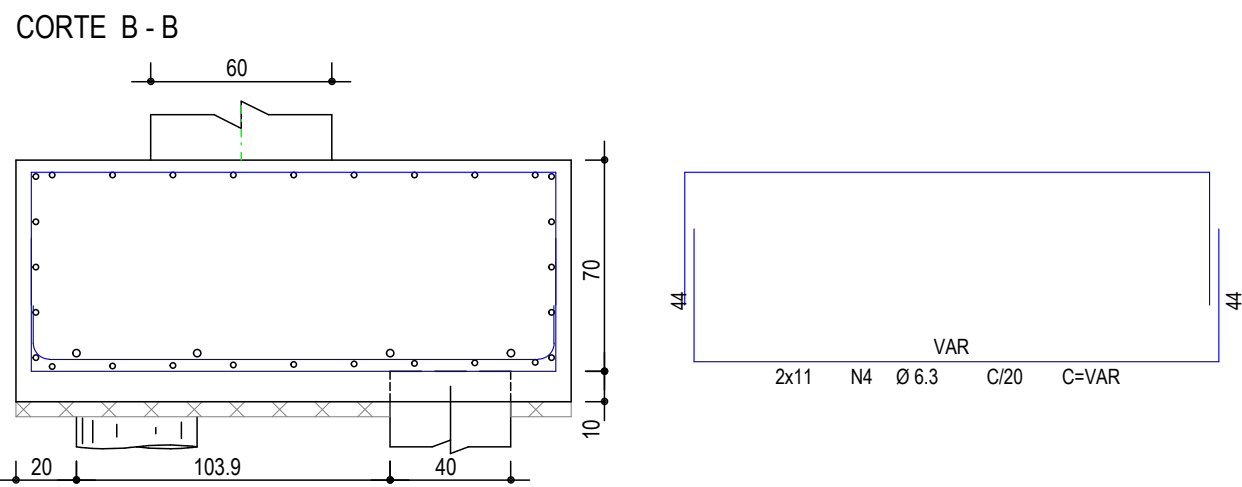
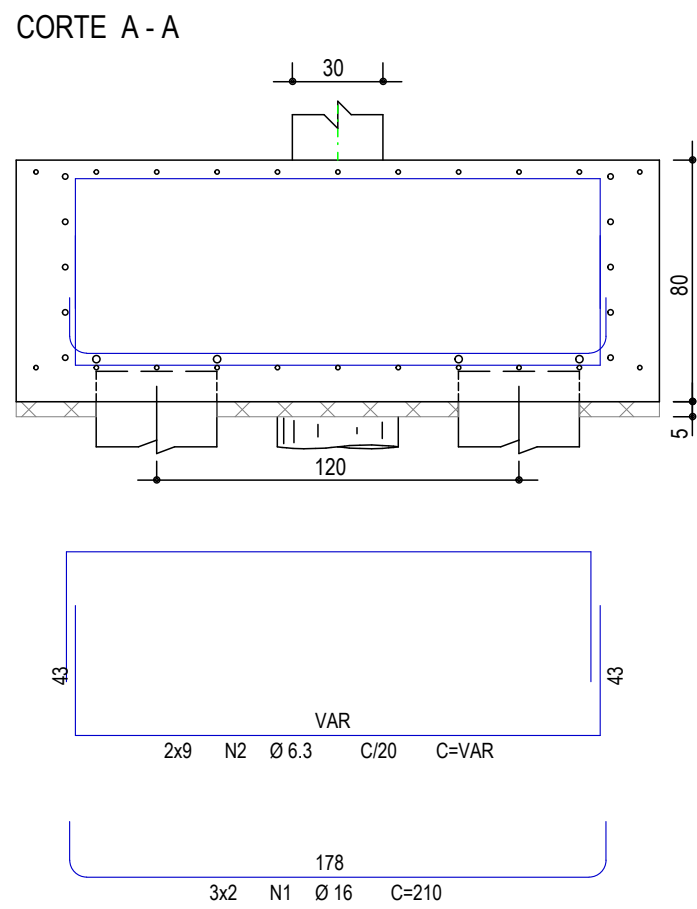
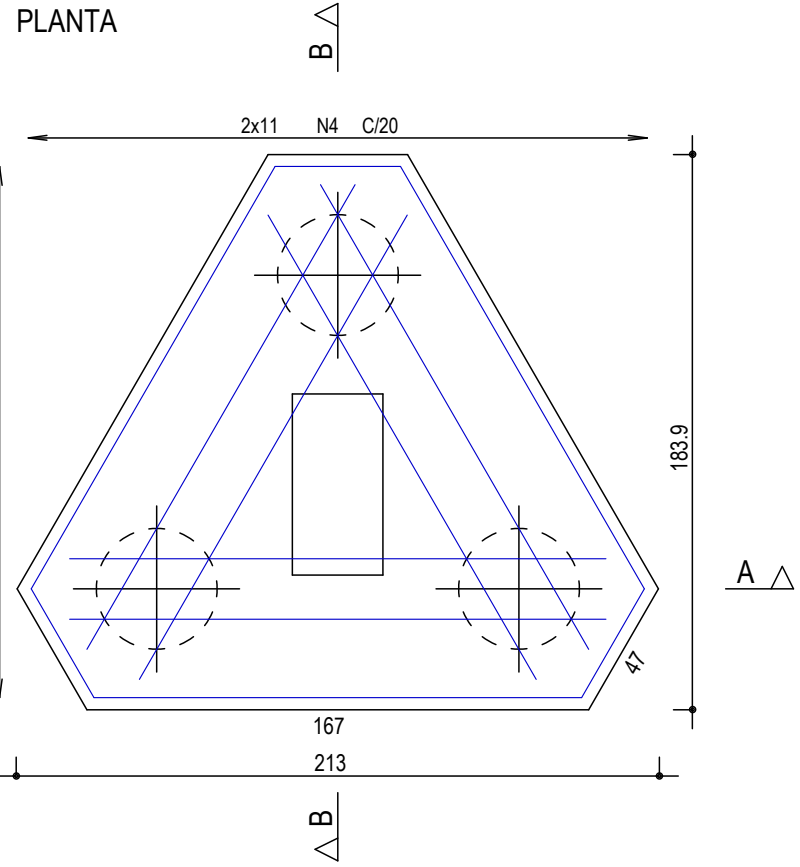
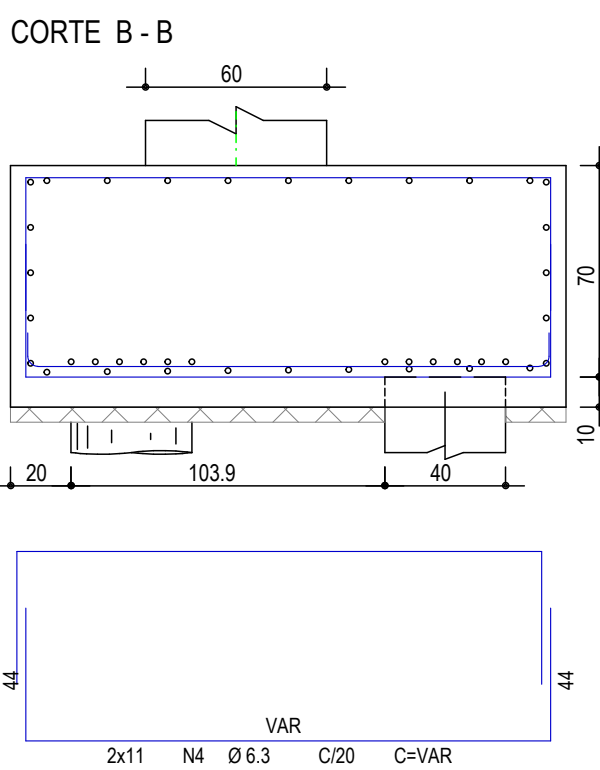
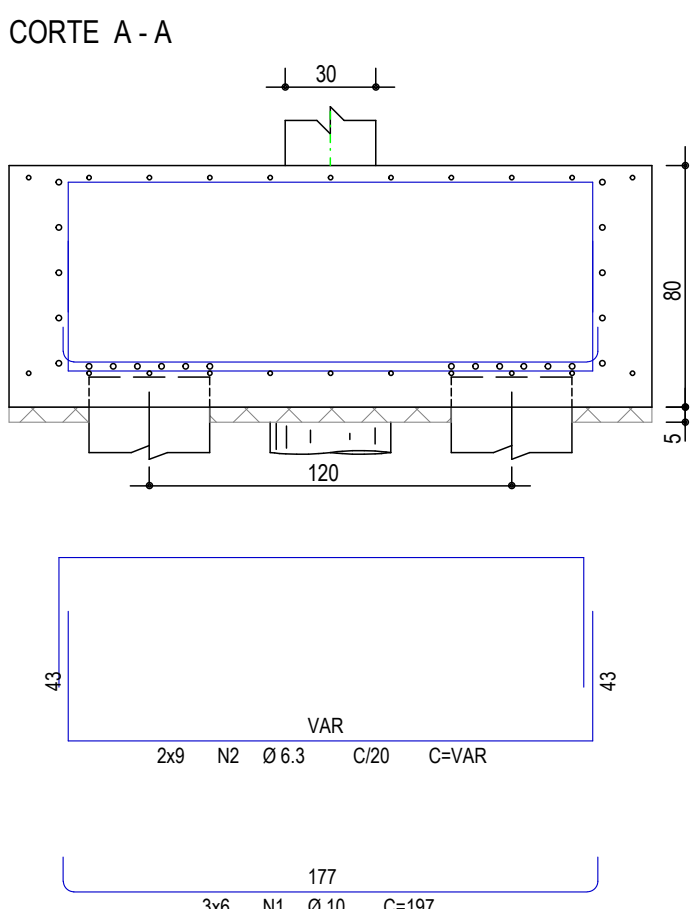
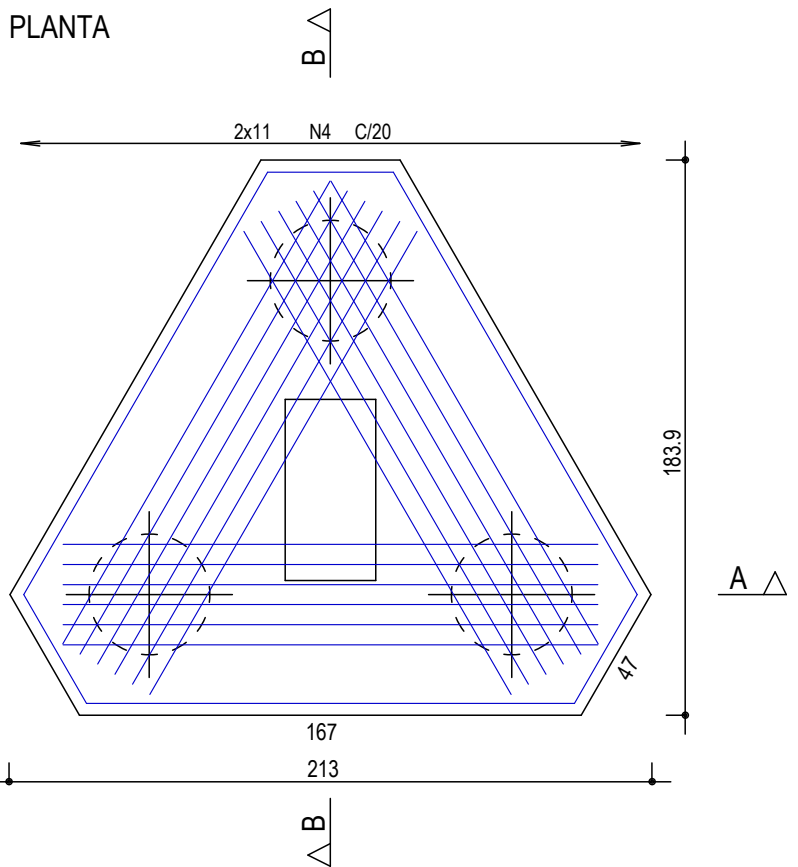


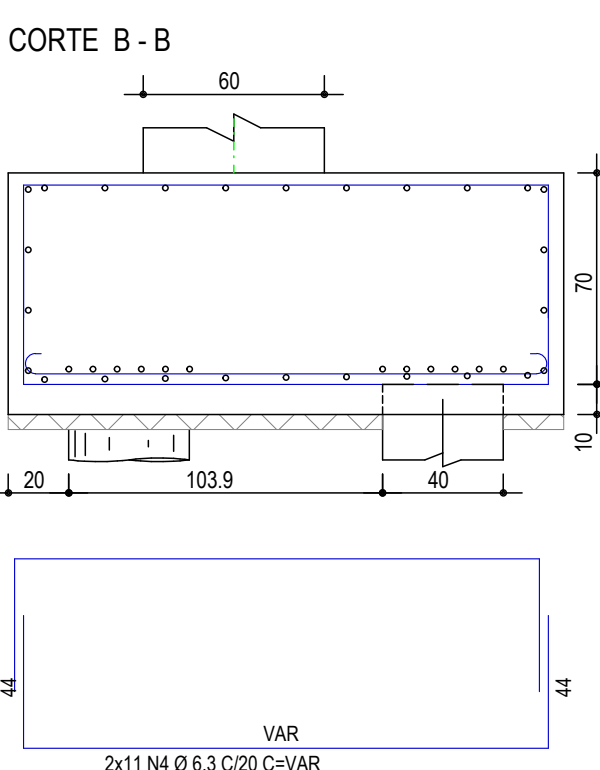
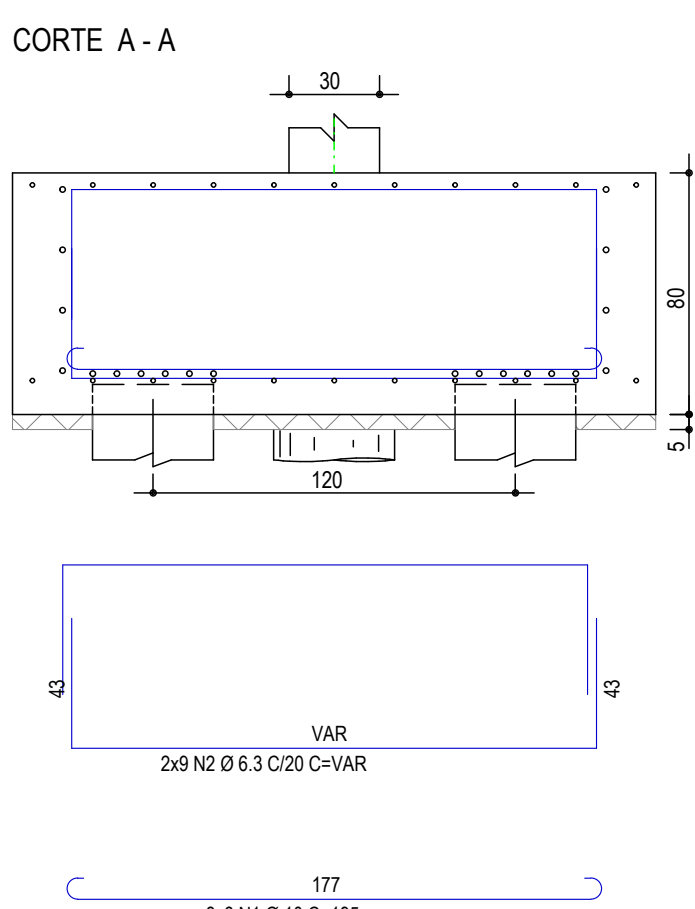
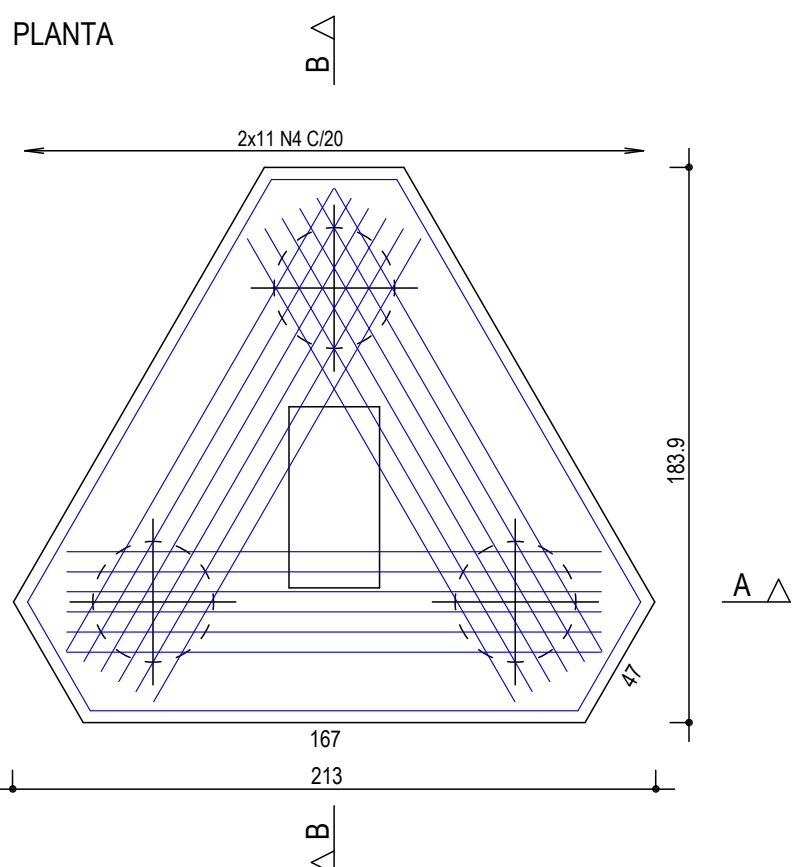
B33  
(ESCALA 1:25)



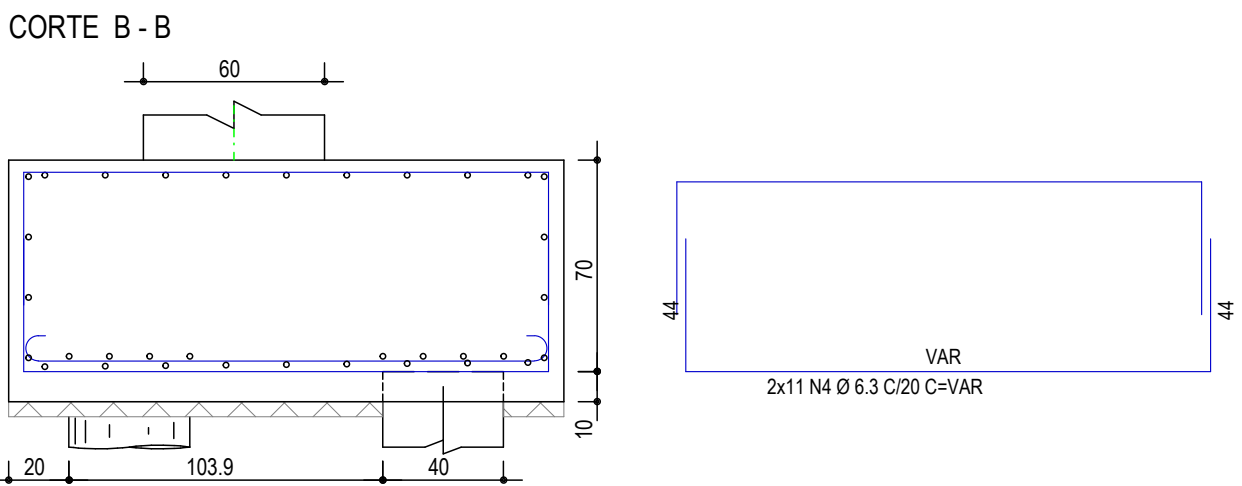
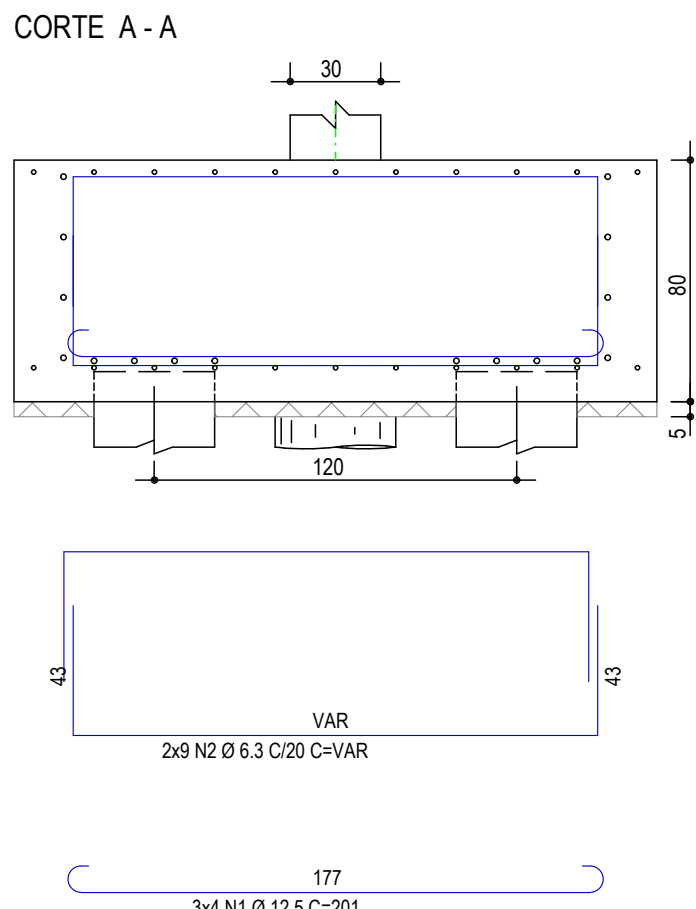
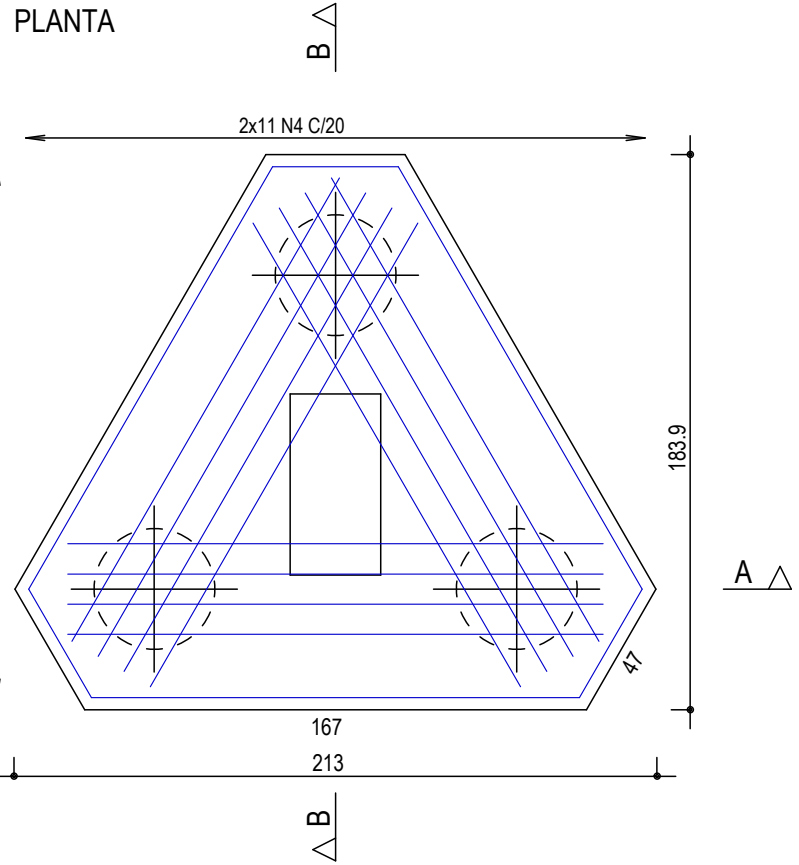
B34  
(ESCALA 1:25)



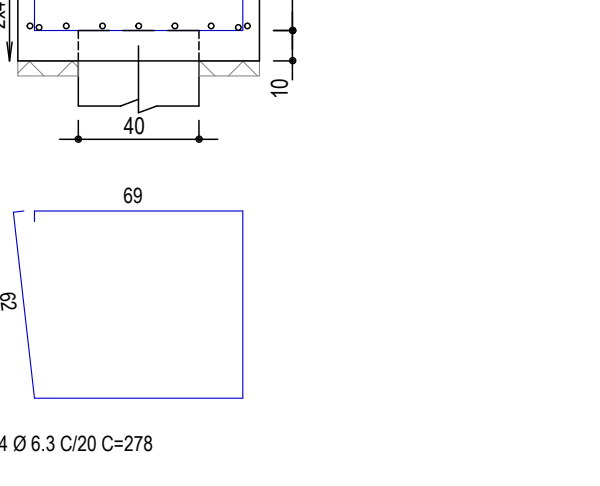
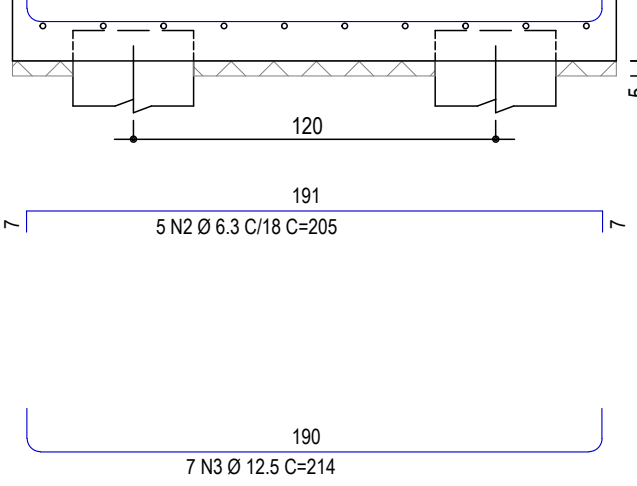
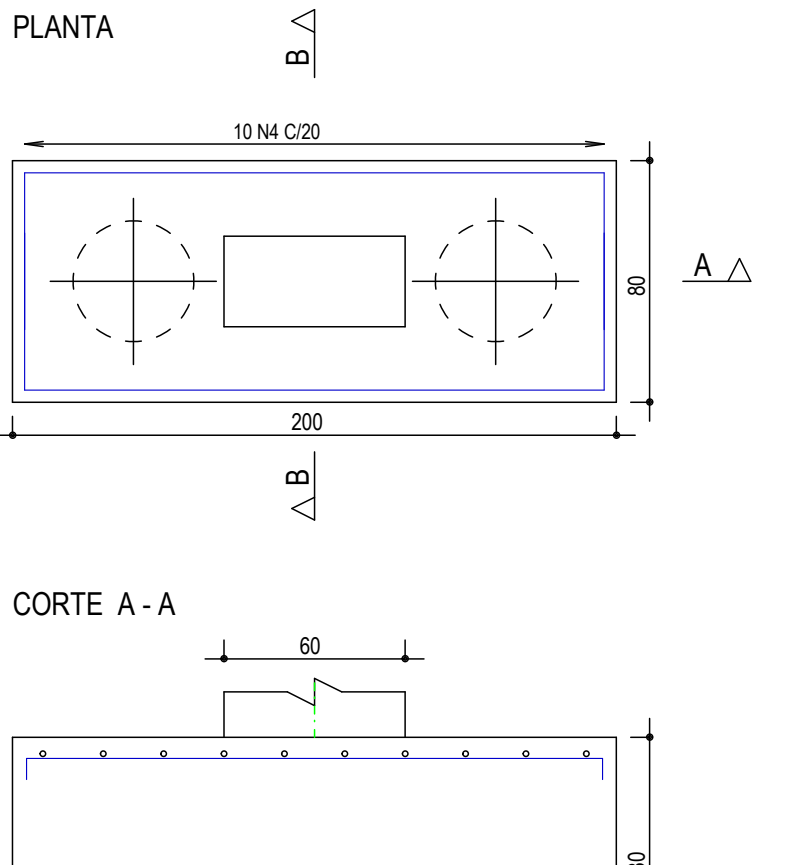
B35  
(ESCALA 1:25)



B36  
(ESCALA 1:25)



B37  
(ESCALA 1:25)



	AÇO	POS	BIT (mm)	QUANT	COMPRIMENTO		AÇO	POS	BIT (mm)	QUANT	COMPRIMENTO		
					UNIT (cm)	TOTAL (cm)					UNIT (cm)	TOTAL (cm)	
B33							B35						
	50A	1	16	6	210	1260		50A	1	10	18	195	3510
	50A	2	6.3	18	--VAR-	3978		50A	2	6.3	18	--VAR-	3978
	50A	3	6.3	5	628	3140		50A	3	8	4	630	2520
	50A	4	6.3	22	--VAR-	4378		50A	4	6.3	22	--VAR-	4378
B34							B36						
	50A	1	10	18	197	3546		50A	1	12.5	12	201	2412
	50A	2	6.3	18	--VAR-	3978		50A	2	6.3	18	--VAR-	3978
	50A	3	6.3	5	628	3140		50A	3	8	4	630	2520
	50A	4	6.3	22	--VAR-	4378		50A	4	6.3	22	--VAR-	4378
							B37						
	50A	1	8					50A	1	8	8	296	2368
	50A	2	6.3					50A	2	6.3	5	205	1025
	50A	3	12.5					50A	3	12.5	7	214	1498
	50A	4	6.3				50A	4	6.3	10	278	2780	

RESUMO AÇO CA 50-60			
AÇO	BIT (mm)	COMPR (m)	PESO (kg)
50A	6.3	435	107
50A	8	74	29
50A	10	71	44
50A	12.5	39	38
50A	16	13	20
Peso Total 50A =			237 kg

CONCRETO 35 Mpa

04							
03							
02							
01							
00	08/10/2020	DGS	EMISSÃO INICIAL		DANILO G.		
Nº	DATA	DES	MODIFICAÇÃO		AUTOR		
<div><div>Oliveira Araújo Engenharia Ltda. Avenida Laguna nº 1.045, 2º Andar Jardim Atlântico - Goiânia / GO. CEP: 74.843-415 (62) 3218-1812 contato@oliveiraraújo.eng.br paulo@oliveiraraújo.eng.br</div></div> <div><div>SERVIÇO SOCIAL DO COMÉRCIO DEPARTAMENTO NACIONAL DEPARTAMENTO DE ENGENHARIA E ARQUITETURA AV. AYTTON SENNA Nº 5.555 - RJ - BLOCO L / SALA 304 sescdea@sesc.com.br (21)2136-5555</div></div>							
CAR		TÍTULO					
CONCRETO ARMADO		PROJETO DE ESTRUTURAS EM CONCRETO ARMADO					
AUTOR PROJ.: OLIVEIRA ARAÚJO		LDO DR - SESC-TO					
DES: OLIVEIRA ARAÚJO		OBRA: CENTRO DE ATIVIDADES - SESC GURUPI - 2ª FASE					
DATA: 08/10/2020		END.: RUA 03, LOTEAMENTO PARK FILO MOREIRA					
ESC: INDICADA		ÁREA EM FOCO			FOLHA EST - 010		